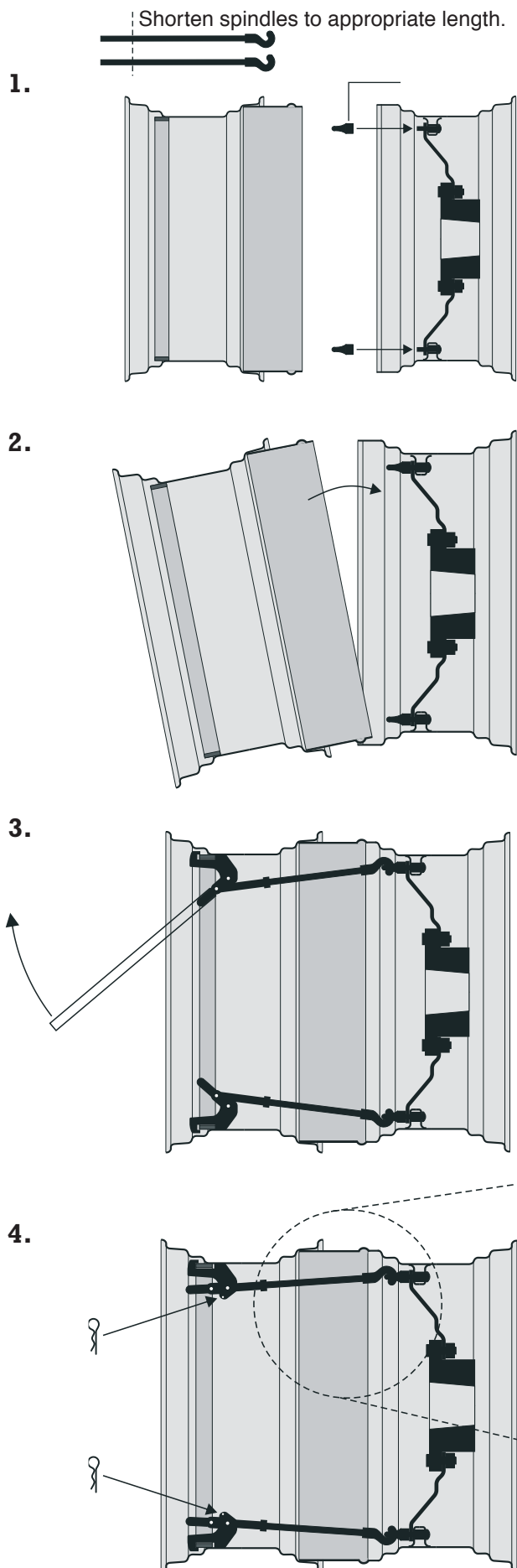


ASSEMBLING INSTRUCTIONS



1. FIRST ASSEMBLY

Before the first assembly, some parts must be fitted before they are mounted.

Replace the standard nuts on the wheel rim with the supplied eye nuts.

Grind the paint off the edge of the distance ring, to obtain the closest possible fit. Mechanical grinding may be necessary.

Shorten spindles with the hooks to the appropriate length.

2. FOLLOWING ASSEMBLY

Drive the tractor up on a block approximately 10 cm high.

Tilt the twin wheel into the tractor wheel rim.

3.

Hook in the spindles, mount the clamps and tighten with the pipe spanner.

The clamps must be tightened crosswise to ensure a symmetrical assembly.

4.

Use the pins to lock the clamps.

Adjust the tire pressure to the lowest allowed level to ensure optimal traction and soil protection.

Check that the distance ring fits tightly into the tractor rim. It should not be possible to insert a sheet of paper between the distance ring and the rim.

Remember to retighten the assembly after ½-1 hours of driving.